

Kia ora/Greetings

Literature Quiz

Last week two teams from Knighton attended the Waikato Literature Quiz held at Berkley Normal Middle School. After lots of reading and fun the children did an amazing job answering 100 questions from ten categories ranging from 'Capital Cities', to 'Comics'. Both teams did an outstanding job, with KNS 1 finishing fifth primary school team, beating many intermediate teams in the process. The next competition is in May, so stay tuned to trial out for the 2021 teams!

Teaching Staffing for 2021

Over the last couple of weeks we have been interviewing and organising our teaching staff for 2021.

Recently two of our current teachers received the exciting news that their applications for study leave had been accepted. Jacki Paea was awarded 40 weeks study leave and Katie McLean was awarded 28 weeks- both will be completing additional qualifications based on their passions in education. Jacki will be returning in 2022 to the school and Katie will be balancing her study with some part-time teaching at Knighton next year, returning to full time teaching in 2022.

Advertised positions attracted huge interest from teachers and made the appointment process exciting, but very challenging. I look forward to sharing with you our full teaching staff for 2021 in the next few weeks.

**Road Patrollers and
Traffic Wardens
NEEDED for 2021 !**

Are you a year 4 or 5 and want to volunteer your time to Knighton and your community?

WE WANT YOU

Sign up to be a road patroller or traffic warden for next year!

Farmyard animals

The Year 1 classes (and Room 18) had a wonderful morning when the farmyard animals visited Knighton. The sun was shining and there were lots of opportunities for the children to get up close to observe, touch and smell the animals - Oreo the lamb, the bunnies Polly and Bilbo, the guinea pigs Elf and Squeaker as well as some chickens. and of course Louie and Sparrow, the ponies, who gave everyone a ride.



Hats

Knighton School Hats are compulsory in Terms 4 and 1.

These can be purchased online through

[my kindo](#) and are **now \$10**.

You may also come into the office to purchase them by eftpos or cash.

Your child will be sent to sit under some shade if they don't have a hat while outside.

The Amazing Race



A group of senior students got to enjoy a day at the gardens doing 'the amazing race' challenge. They formed two teams and worked together

all day to overcome challenges and obstacles. What fun!

Ninjas - Liam, Jesse, Malakai, Bella, Kairuku, Gracee, Fergusson

Knights - Jonah, Riley, Te Ataahua, Whetu, Cali, Daniel, Nathan, Nonoka

Football uniforms

Stephen Hine has requested all football uniforms be returned to the office please with your child's name and team name on it.

Parent Survey

Remember to give the Board of Trustees valuable information about our schools direction moving forward by filling out the parent survey that went home recently.

- Fill in the paper form and return it to the office.
- Complete the online form (available from the school's Facebook page).

Yummy sticker

Thank you for your sending your Yummy stickers to school - as a result we will receive over \$400 worth of free sports gear. Please continue to save these ready for our 2021 collection.



Peanut allergy



We have children at our school with severe allergies to nuts. It would be helpful if you could keep their allergies in mind when preparing morning tea and

lunch for your child. We appreciate your support with this matter.

If your child has allergies that we are unaware of please let your child's teacher and office staff know immediately.

Hearing and Vision testing

Vision Hearing Technicians from Community and Southern Rural Health will be visiting our school on **3rd November**.

The objective of the test is to identify previously undetected vision and hearing defects for students who have not previously been tested.

If any parents/caregivers **do not** want their child to be checked, or their child is currently under specialist care for a vision or hearing defect, they should let the school office know.



What tests are carried out?

Ears

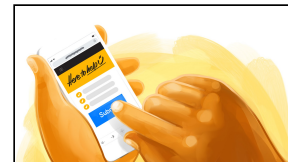
Audiometry (hearing test)
Tympanometry – middle ear function test (only carried out when hearing test is not within a normal range)

Eyes

Long distance vision tests – not a complete visual examination, but a simple screening test

All of these checks are non-invasive, safe and should cause no discomfort.

'Here to help u'



Created by the community for the community, social service support is now just a click away with 'Here to help u.' You can request support across a range of categories including free assistance with food parcels, prepared meals, collection of items service, mental health support, and safe social connection.

More info here :

<http://www.heretohelpu.nz/>

Ngā mihi nui
Stuart Armistead
Principal