

Kia ora/Greetings

Middle School Athletics!

Tomorrow's Middle School Athletics morning has been **postponed** until this Friday 13th November 9.15-12pm. Senior field and turf.

New Entrant Open Morning

This Thursday 12th November, from 9.30am to 10.40am we are holding our new entrant open morning for prospective enrolments. Anyone with a child turning 5 in the next few months, is welcome to come.

Important Dates

The end of the year is approaching fast. There are a couple of events happening in the next few weeks.

13th Nov - Middle School Athletics 9.15-12pm

17th Nov - Arts Showcase 9.30am

24th-26th Nov - Middle School Trips to Maungatautari.

Keeping our children safe

Thank you to the large number of people who have commented positively about the new signs on Knighton Road promoting sensible parking.



Please park in a safe place and remember that there are many excellent options:

- The church car park
- At the end of Knighton Road
- Henry Street

Junior school play pods

We are always on the lookout for play items for our junior school play pods.

Can you help with donating items like: pots and pans, sheets and blankets, boxes (large and small), planks of wood, pipes and spouting, reels, tarps, etc? Our children love to use these in their play, and we would be so



!Junior Play Space- job offer!

We are looking for a builder or a person with suitable skills to do some work in our junior play pod area. If you are interested in this please contact Anne Hoare or Keirryn Hintz at school.

Knighton Normal School Free App

Please download our free App on an iPhone or Android device by going to:

<http://onelink.to/mnfdrg> or search Knighton Normal School at the App Store or Play Store.

App Features:



- Direct dial/email absences.
- Subscribe to and receive timely alerts from different school groups.
- View and add school events to your phone's calendar.
- Receive advice of school notices to your phone.

Absences

Please notify the school **office** not your child's teacher if your child is absent from school. Please tell us your child's name, room number and the reason for their absence. If the absence is for more than one day please also advise this in your message. If a child is absent from school without notification, they may be made truant.

There are several options for an absentee notification:

- School App: <http://onelink.to/mnfdrg>
- Phone (07) 856 5393 (voicemail)
- Text 027 352 2089

Lateness

Children arriving at school late (even by a few minutes) must come to the Smiley Window to be signed-in electronically by the office staff. Children will be asked why they are late and their reasons will be entered into this system.

Leaving School Early

All children are expected to be in class until 3pm unless there is a special reason for leaving early. *If you are taking your child away from school prior to 3pm, please sign them out at the **office** before going to your child's class.*

appreciative! Please talk to Keirryn Hintz in Room 15
if you have items to donate.

Our Tamariki

Great to see our children out playing and enjoying sports. Sport is a great way for children to practice our KNS Way attributes of being confident, displaying persistence and getting along with others!

Tee Ball



Friday last week saw two teams of students head out to Tauwhare School to take part in the annual South Eastern Cluster Teeball tournament. There were 6 schools competing, with two teams each, a total of 12 teams competing in this year's competition.

The Knighton Knights won 2 games, drew 1, and lost three.

The Knighton Giants won all six of their games, one of only two teams to do so. On countback, the Giants placed second overall. This was a great result for Knighton, and well done to the Giants.

Both teams improved throughout the day and learnt lots about the game, practised their sportsmanship, and had a great time.

Room 16

By Kiyara Indralal



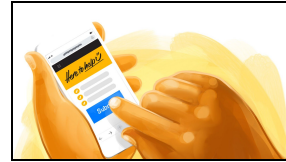
Class Consultation forms

Notices have been sent home for parents to have the opportunity to have some input into their child's class for 2021.

This is entirely optional but these forms are due back this Friday 13th November if you wish to have an input!

'Here to help u.'

Free health, wellbeing or social support can be accessed easily at www.heretohelpu.nz.



'Here to help u' was developed during COVID-19 Alert Level 4 lockdown so that people could quickly access health and wellbeing support. It's a community initiative that was designed and supported by Hamilton community service providers, volunteers, and funders to provide hardship and social service support to local people. 'Here to help u' has been so successful that it continues to be available so that individuals and whanau can get the right help they need when they need it.

You can request support across a range of categories including **free** assistance with food parcels, prepared meals, collection of items service, mental health support, and safe social connection.

To access this support go to www.heretohelpu.nz at any time and simply submit a request for help.

Waikato Community School of Music (WCSM)

Open Day Saturday 28th November 9:00-11:30am

TT building entrance, Gate 4, Hillcrest Road

(University of Waikato campus)

For more info please visit wscsm.ac.nz

Ngā mihi nui

Stuart Armistead

Principal