

**SUPPORT STAFF
APPRECIATION WEEK**

Kia ora/Greetings

A reminder that our School will be closed for:
Teacher Only Day - Monday 21st of June

Appreciating our Support Staff

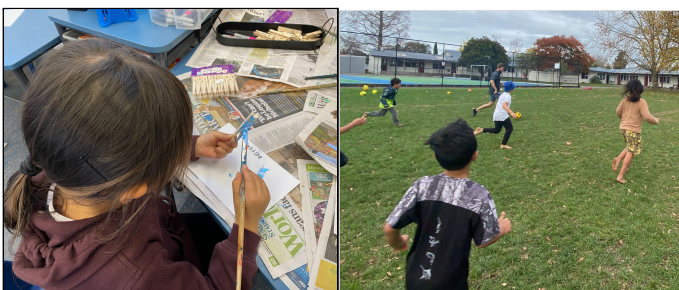
This week is 'Support Staff' week. Knighton Normal School has a large group of support staff including our caretaker, groundsman, kaiawhina, learning assistants, English language learning assistants and our office team and amazing librarian.

This team works with such care and passion to make sure that our teachers have the best opportunity to focus on teaching and that children are supported with their learning and behaviour.

Middle School Electives Programme



Our middle school team is currently completing an elective programme. This provides the children with an opportunity to try new sports, crafts, cooking and other activities. The children are having great fun!



Teacher Only Day- Critical Histories



Last Friday our whole staff visited Rangiriri to learn about the significance of the area. This was a very powerful experience and one that will help us in our commitment to learning about and teaching the critical histories of Aotearoa / New Zealand.



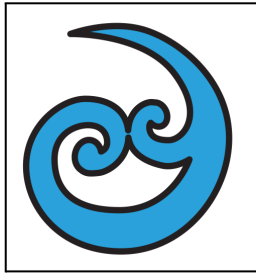
Carpet Court donation



We are very grateful to have received a \$2000 donation from Carpet Court. This money and their time will go toward a project to enhance a learning area in our school.

New Entrant Parent Open Morning

Next Thursday, the 17th of June from 9.30am to 10.40am we are holding our new entrant open morning for prospective enrolments. Anyone with a child turning 5 in the next few months, is welcome to come.



Whakaute

- Respect

The value of Whakaute (respect) underpins everything we do at Knighton Normal School. We talk to our classes about:

- Understanding the power of manners and respecting your elders.
- Making sure all voices are heard.
- Respect for self, others and the environment.
- Having empathy for others
- That we have the opportunity to make someone's day with what we say and do.
- Valuing yourself and others.
- The power of active listening.

Spare Clothing



With the rainy weather now upon us and as we have very limited spare clothing available for children, we suggest you keep a change of clothes in your child's school bag in a waterproof plastic bag. Please make sure ALL your children's clothing is named so it can be returned to them if they misplace it. If your child comes home with clothes borrowed from school please wash and return them as soon as possible.

music house at Knighton



Limited spaces available for:

- * keyboard
- * drums
- * guitar
- * ukulele

Cost:

- * individual - \$33
- * pairs - \$19
- * group of 3 - \$14

- lessons are 30 min long -

enrol online at www.musichouse.co.nz/enrol

general enquiries email: admin@musichouse.co.nz

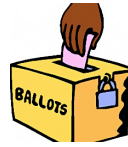
phone: 07 808 0275



Save the date: Book Fair

28th June - 1st July

In the school Library



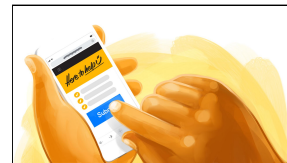
Out of Zone Enrolments

The Board of Trustees is looking to accommodate siblings of existing students who are living out of our enrollment zone. If you have a child in this situation please go to our website, download and fill in the form, or come to the office to complete the application.

The next ballot will be held on **1st July 2021**. Applications must be received by 30th June for any children due to start in term 3.

'Here to help u.'

Free health, wellbeing or social support can be accessed easily at www.heretohelpu.nz.



'Here to help u' was developed during COVID-19 Alert Level 4 lockdown so that people could quickly access health and wellbeing support. It's a community initiative that was designed and supported by Hamilton community service providers, volunteers, and funders to provide hardship and social service support to local people. 'Here to help u' has been so successful that it continues to be available so that individuals and whanau can get the right help they need when they need it.

You can request support across a range of categories including **free** assistance with food parcels, prepared meals, collection of items service, mental health support, and safe social connection.

To access this support go to www.heretohelpu.nz at any time and simply submit a request for help.

Stuart Armistead
Principal