



ADDRESS | 45 Knighton Road, Hamilton, 3216

PHONE | (07) 856 5399

WEBSITE | www.kns.ac.nz

PRINCIPAL | Andrew Campbell PGDip. Org. Behaviour, B.Ed., Dip.T.

5 Huitanguru 2024

Akomanga 29

Ayubowan, assalam u alaikum, see tahay, namaste, talofa, malo e lelei, tēnā koutou e te whānau, nau mai, haere mai ki tēnei akomanga toru tekau! Welcome to Akomanga 29 ❤️

As we begin an exciting new year in Akomanga 29, I would like to welcome those of you who are new to our whānau akomanga (classroom family) and welcome back those we already know.

Tēnā koutou katoa.

Ko Hāmoa me Kōtirana te whakapaparangi mai

My ancestry is Samoan and Scottish

Ko Kirikiriroa te whenua tupu

Kirikiriroa is where I grew up

Ko Kirikiriroa te kāinga

Kirikiriroa is my home

Ko Christopher Cant tōku matua

Christopher Cant is my father

Ko Kathleen Cant tōku whaea

Kathleen Cant is my mother

Ko James Forrester tāku tane

James Forrester is my husband

E rua aku tamariki

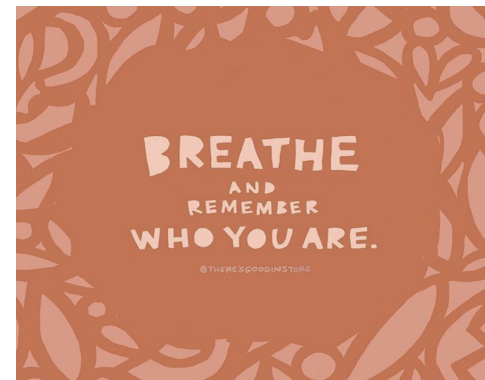
I have two children

Ko Scarlett me Stella a rāua ingoa

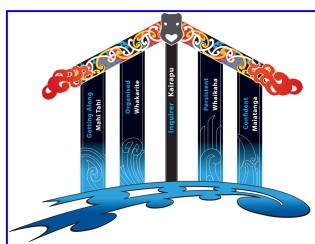
Their names are Scarlett and Stella

Ko ahau tēnei, ko Deborah e mihi atu nei.

This is me, Deb giving acknowledgment to everyone



This term our Knighton Way focus is Mahi tahi - Getting Along. We will spend time exploring what this means for us as a whānau. If you would like to find out more about the Knighton Way and our values, please visit our school website www.kns.ac.nz



- I am a role model at KNS
- I use my WITS & PETS
- I speak and act respectfully
- I work with anyone no matter what our differences might be
- I value friends and actions that 'lift' others up, not put people down

PROGRAMME INFORMATION

Te Reo Māori me ōna tikanga

In Akomanga 29 learning te reo Māori me ōna tikanga (Māori language and customs) is an important part of our daily routine. We are all learning together. Our goal is to 'normalise' the use of te reo within our kura (school) and community. You can join us on our journey by asking pātai (questions) about what we are doing in class and practising using the kupu (words) that you know in your everyday life and with your tamariki (children).

Dramatic Inquiry and mahi toi (the arts)

We combine inquiry, drama and the arts with our imagination while learning about real and meaningful concepts and ideas, with a strong focus on the critical histories of Aotearoa. Our initial focus is Te Tiriti ō Waitangi. We take on different roles, learn to trust our judgement, problem solve, make decisions and share power and responsibility for our learning. We learn to walk in both the real and the imagined worlds at the same time

Reo Matatini / Literacy

We learn and practise literacy skills every day. Our initial focus is to develop a love of books, through being read to, reading independently and sharing a book with others. We will also continue our learning through sharing our ideas and thoughts orally and in writing.

Pāngarau / Mathematics

In the senior kura, we cross-group for maths each afternoon starting in Week 3. Tamariki are in class groups that challenge their thinking, extend their understanding of maths concepts and encourage them to work both independently and collaboratively to solve number and word problems.

ADMINISTRATION



We use the seesaw platform to share your child's learning and let you know what is happening in class. I sent an email invitation to whānau last week and many of you are now already signed up - thank you. For those not yet connected, a letter came home today with instructions for how your whānau (family) can join your child's journal and our class. Feel free to get in touch if you need any help with this (dforrester@kns.ac.nz)

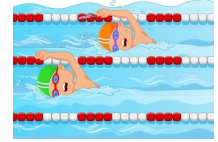
Online Kindo shop

To avoid office queues, and to ensure your payments are accounted for correctly, we encourage you to pay school costs online through our Kindo shop. If you do not already have a Kindo account, go to www.mykindo.co.nz or via the link on our school website. There are no fees for Kindo payments unless you choose to use a credit card. Using a Kindo account is the most efficient way to pay - and you don't need to send any paper forms back to school, so nothing gets lost in school

bags. Our great office staff are happy to help you if you have any questions or need any assistance setting this up.

Whare Pukapuka (Library)

Our library day is Rāapa (Wednesday). Tamariki can issue two books each week that they can take home to read. Please remind your child to return their pukapuka (books) each week.



Class swimming

We swim every **Rātu/Tuesday** and **Rāmere/Friday**. It is an important part of our programme and lots of fun. Your child will need to bring their togs and a towel each day, inside a waterproof bag. If your child is not swimming, please let me know either by email, Seesaw or send a note to kura (school). Information about senior swimming sports will come home later in the term.

Important to Note...

- **Medication:** A reminder that a consent form must be filled in and left at the school office for any medication administered at school. A consent form can be downloaded from our website or collected from the office. All medication remains in the office for safekeeping during the day.
- **Stationery:** Our stationery notice went home on Friday. If you would like to organise a payment plan please don't hesitate to contact the office to work something out - they are more than happy to do this as we understand this can be a very expensive time of year.
- **Cell phones:** We prefer children to leave cell phones at home but understand that some children require a cell phone for safety reasons and to contact family members after school. If children do bring a cellphone to school this needs to be handed into the office or kaiako until the end of the day.

If you'd like to contact me, you can message me using the Seesaw app or via email at dforrester@kns.ac.nz. Please also know that you are always welcome to visit in class.

I look forward to getting to know you over the coming year and building relationships that allow us to work together to provide the best possible care and support for our tamariki.

Ngā mihi nui

Deb