

# Newsletter 1

7th February 2024

Welcome back everyone!! A warm welcome to new families to our school. We hope your child/ren have settled in well. It's been really nice walking around the school reconnecting with everyone. We're looking forward to a great year.

We have recently welcomed back Megan Bevan to our staff this year. Megan taught at Knighton for a number of years before leaving to travel overseas last year. Megan is teaching in the ELL team this year, specifically with the new learners of the English language.

We also welcomed Nenehu Hughes as Kaiawhina in Te Hihiri and Jake Scurrah as English Language Learning Assistant in the ELL Hub.

Sadia Mire has resigned from her position as English Language Learning Assistant in the ELL Hub and Jodie Rapana (ELLA) will be leaving later in February to do tertiary study.

A notice will be going out today about the upcoming Whānau Picnic next Tuesday 13th February 5.00 - 6.30pm. We would love to see you there.

Next week, we are expecting the pedestrian crossing on Wairere Drive to be closed due to drain laying. Kirikiriroa Marae have kindly offered the use of their car park spaces at the front (off Wairere Drive) during drop off and pick up times. More information will be out soon.



## Cell phones

We prefer children to leave cell phones at home but understand that some children require a cell phone for safety reasons and to contact family members after school. If children do bring a cellphone to school this needs to be handed into the office or to the kaiako/teacher until the end of the day.

## Vision & Hearing Checks

Vision & Hearing Technicians will be visiting our school on **Thursday 22 February**. The objective of the test is to identify previously undetected vision and hearing defects.

If any parents/caregivers do not want their child to be checked, or their child is currently under specialist care for a vision or hearing defect, they should let the school know.

**The technicians will check children who have not completed vision and hearing checks as part of their Before School Check, and children absent from previous visits or who require retests or follow up.**

All of these checks are non-invasive, safe and should cause no discomfort.



### Focus on attendance

Attendance below 90% is considered poor and your tamariki/child could be getting into a routine of becoming persistently absent. This means they're missing out on important learning opportunities. What does 90% mean? 90% attendance = missing half a day every week. Over one school year, that's four weeks of learning lost.

### Regularly attending

Attends school more than **90%** of the time: A child who is regularly attending school misses less than one week of school across a term.

### Irregular absence

Attends school **80-90%** of the time: A child who is irregularly absent from school misses 1-2 weeks of school across a term.

### Moderate absence

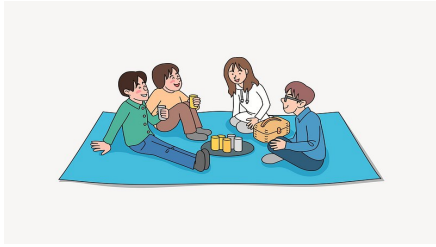
Attends school **70-80%** of the time: A child who is moderately absent from school misses 2-3 weeks of school across a term.

### Chronic absence

Attends school **70% or less** of all school time: A child who is chronically absent misses three weeks or more of school across a term.

## Thank You

We would like to give a big thank you to Sam, the owner of Four Square on Clyde Street for his generous donation and commitment to donate kai/food to our kura/school. This will be used to provide lunches for any of our tamariki/children who may need kai.



## Whānau Picnic

Come along and enjoy a picnic on Tuesday 13th February. Andrew Campbell, our school principal, will speak briefly and whānau/families can visit their child/ren's classes where teachers will be available for a chat.

There will be some games and sports equipment for you to use.

**\*Bring your own food to share with your whānau**

### Bikes and Scooters

- If your child brings a skateboard, bike, scooter or roller blades to school please ensure they are labelled with your child's name so they can be clearly identified.
- **Bikes** should be locked to the bike stand opposite the Literacy Centre/swimming pool.
- **Scooters** should be locked to the fence next to room 25.
- Skateboards, scooters, bikes and roller blades are not to be ridden in the grounds or on pathways at any time.
- Scooters and bikes etc are at school at the owner's risk.

## Playtime Visits

Enrolled preschoolers can attend Playtime sessions with their parents/caregivers before they turn 5 years old. These sessions are held each Monday from 1:50 pm to 2:45 pm for up to 10 weeks prior to starting school. These sessions will begin on Monday, 12 February 2024.



## Lost Property

Please come and look through the lost property outside Mrs Cowie's office regularly.

Named items can be returned to children but unfortunately most of the clothing that is lost by children is unnamed. Please remember to name swimming togs and towels too.

All unnamed belongings that are not claimed are donated to a second hand shop.

## Reminders

- **Change of clothes:** Please make sure your child has a change of clothes in their school bag, they may get wet and muddy playing on the field in the break times, or have a toileting accident.
- **Medication:** A reminder that a consent form must be filled in and left at the school office for any medication administered at school. A consent form can be downloaded from our website [www.kns.ac.nz](http://www.kns.ac.nz) or collected from the office. All medication remains in the office for safekeeping during the day.
- Our school has a **No Sweets** and **No Nuts** policy. Please refrain from including these items in your child's lunches.
- We are a **Water Only** school. Please encourage your child to bring a drink bottle filled with water and to drink regularly during the day.
- At 10am daily the children have a **Brain Break** in the classroom. Appropriate low sugar, healthy snack foods could be, a piece of fruit, vegetable sticks, yoghurt, or a small sandwich.



## Note your calendar

- 13 February - Board of Trustees meeting, 6:00pm**
- 13 February - Whānau Picnic, 5:00 - 6:30pm**
- 22 February - Whanau hui, 5:30 - 6:30pm**
- 29 March, Good Friday - SCHOOL CLOSED**
- 1 April, Easter Monday - SCHOOL CLOSED**
- 2 April, Easter Tuesday - SCHOOL CLOSED**
- 12 April - End of Term 1, 3:00pm**
- 29 April - Term 2 begins 9:00am**

Ngā mihi nui  
*Andrew Campbell*  
Principal